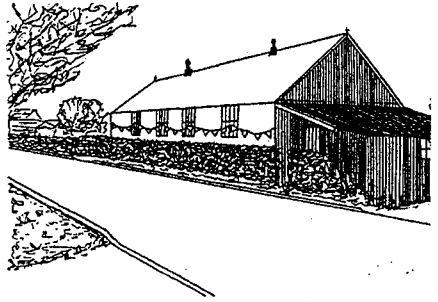
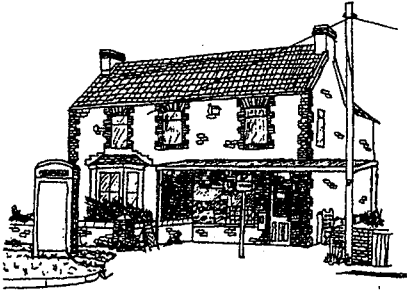
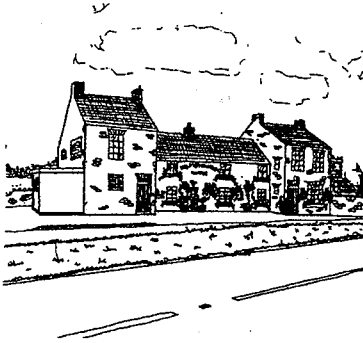


KENN NEWS AND VIEWS



K e n n



EDITOR

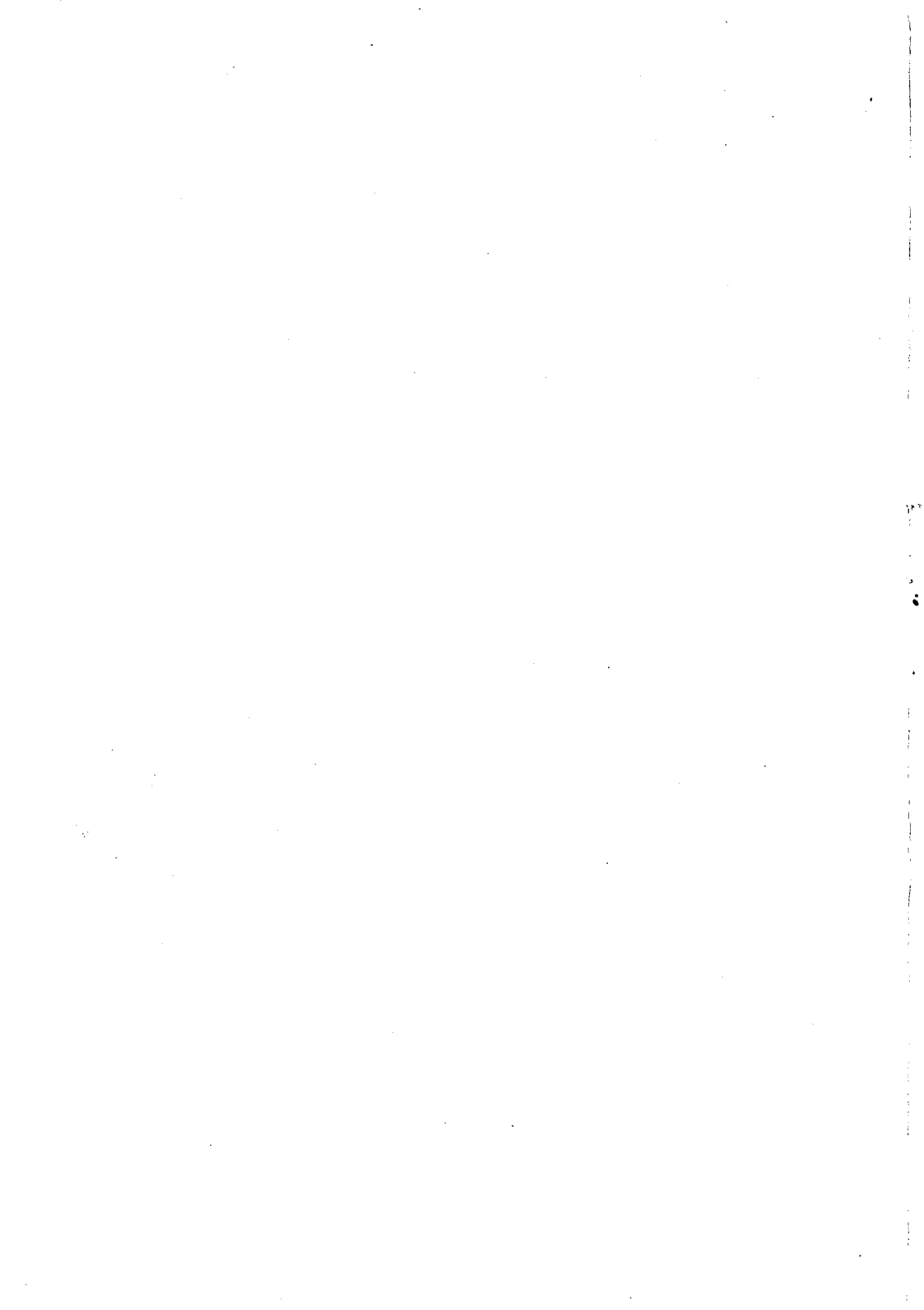
Sheila NAISH

01934-838357

Issue 97 SEPTEMBER 1996

Printed by:- Margaret STOWELL

Typed by:- Simon PASCOE



KENN NEWS AND VIEWS

MESSAGE FROM ED

Simon PASCOE has now stepped into Richard's shoes and is now our typist. Copy for the magazine can be left at Kenn Stores, Ray NAISH's or given to Simon direct.

Articles to be in by 17th of each month.

TYPIST'S PLEA

I now know why Richard was follicularly challenged - it was self inflicted waiting for NEWS & VIEWS copy!!

Please keep to deadline.

If any offerings can be given to me on PC compatible disc so much the better - I have yet to graduate beyond two-fingered typing!!

SNIPPETS

Fashion Show - 80 ladies enjoyed the event on August 14th.

Mrs THURSLY of Carousel of Congresbury and her models presented clothes for all sizes to suit all tastes and occasions. The profit for the evening amounted to 294.00.

Household Insurance - Warning, at a recent meeting of Parish Councillors it was suggested that Household Insurance Policies should be checked to see if cover is still in operation if policy-holders leave windows open when they are away from home.

Mr John STOWELL -

Mr STOWELL had been in failing health for several years and passed away in Belmont Nursing home on August 12th.

John was born at Portbury House seventy six years ago and apart from a short time in the army he lived and farmed there until he became ill.

His funeral took place at Kenn Church and was conducted by John CRUSE and a large number of family and friends were present.

Our new flag was flown at half-mast on a temporary flagpole.

To Irene, Marie, Hazel, Jack and Kayleigh and Kathleen we extend our sincere sympathy in their great loss.

Mr Howard WATKINS -

Mr Watkins who had been unwell for sometime passed away in Southmead Hospital on August 12th. During his illness he received much care from his neighbours Hartley and Jane STAPLES and Barbara MIDDLETON.

He was born in Langford in 1914 and after living in Yatton came to Dahlia Cottage in Kenn some 15 years ago.

The funeral took place in Kenn Church conducted by John CRUSE and was attended by family, friends, Rotarians from Yatton and members of the Agriculture Lodge of Freemasons. Our flag was flown at half mast.

To his family we extend our sincere sympathy in their great loss.

Welcome - A warm welcome to Mr and Mrs BROMFIELD and Mrs JONES who have come to live at Trevone. We hope they will enjoy living in Kenn.

Britain in Bloom - To all those who did a bit extra to beautify our Village a warm thank-you.

Date for your diary - September 11th Kenn Women's Institute 7.30 speaker Mr PLATT on sugar. Competition slogan for sugar.

WE

We met, we married a long time ago

We worked long hours for wages so low.

No telly no radio no bath, times were hard

Just a cold water tap and a walk up the yard.

No holidays abroad, no carpets on the floor

We had coal on the fire, we never locked doors.

KENN NEWS AND VIEWS

Our children arrived, no 'Pill' in those days
And we brought them up without any State
Aid.

No villains, no drugs, no LSD

We cured our pains with a good cup of tea.

If you were sick you were treated at once

Not "Fill in a form and come back in six
months".

No vandals, no muggings, there was nothing
to rob

In fact we were rich with a couple of bob.

People were happier in those days

Kinder and caring in so many ways.

Milkmen and paper boys would whistle and
sing

And a night at the flicks was our mad fling.

We all had our share of trouble and strife

And just had to face it because that was life.

But now I'm alone and look back through the
years

I don't think of the bad times, the trouble the
tears.

I remember the blessings, our home and our
love

We shared them together and thank God
above.

Anon

HISTORY GROUP

On another lovely balmy evening we assembled at Stonehouse Farm for our last outdoor walk of the season. As well as Kenn folk it was nice to see a good number of our friends and neighbours from Kingston Seymour.

The walk was to be on the land of Nailsea Wall Farm at West End at Nailsea. Ray noted that although this walk had been done before things had changed such that it was worth

repeating. As we parked on the field, the lovely old house, known as Little Manor was in view. This house, known to be very old has been beautifully kept and preserved, surrounded as it is by dry stone walls. These flat stones seem to be scattered in profusion in the fields around, and local craftsmen skilfully use them to make the walls, which are both effective and very pleasing to the eye, blending easily into the landscape. Once, during repairs to a wall old bones were found amongst the stones. These bones of cattle were dated as at least 300 years old proving the age of the wall itself. In fact, it is known that the Romans used these stones to construct a simple kiln for drying their.

In all the land consisted of about 72 acres and has been in the Naish family for some years. Passing the farmhouse, there was an enclosure holding some interesting and rare chicken and pheasant. Some of the pheasants and hens were particularly colourful and so it is nice to know that someone is interested enough to keep these somewhat rare creatures from dying out.

Before the modern drainage system was put in to this moorland it used to regularly flood to a depth of nearly 3ft. In a copse of Alder you can still see that the very old tree roots were actually above ground because at one time they were regularly immersed in water. The earth around her is very black, soft and peaty and an ordinary walking stick could quite easily be pushed into the soil to its full length.

Next, we came to the River Kenn itself slowly winding its way across the moor. Some years ago, the Environment Dept. had asked the NAISH family for permission to plant experimental hedging for almost a mile along the bank of the river, this was granted and we were able to see the result. Originally the river bed and the banks were cleared by hand and little damage was done but when machinery

KENN NEWS AND VIEWS

began to be used damage was done resulting in the banks crumbling. We saw that the new hedge of willow and various other shrubs was now established protecting the banks. Hereabouts it is quite isolated and a haven for wildlife. In the spring and summer there are many birds, wildflowers and butterflies to be seen and even otters have also begun to return. At one time the banks were common-land and local people could graze a few animals to augment their living, latterly however that right was refused resulting in some hardship.

By now we had reached that part of the meadow that was at its lowest and the water level came almost up to the field itself. Strangely the water level in the summer is higher than in the winter because level is controlled by sluice gates operated by the River Authority and so flooding is almost a thing of the past.

We were now walking uphill and back to our starting point, going by some white willows which are now quite rare and Ray also noted that the Elms which had been decimated by disease were beginning to re-colonise the hedgerows. Now from our higher starting point we could look down at the gathering mists in the hollows. That golden orb which is the sun was dipping below the western skyline treating us to a magnificent sunset. Although only mid-August there was a touch of Autumn in the air and this reminded me of a few lines from Keats:-

Autumn

Season of mists and mellow fruitfulness

Close bosom friend of the maturing sun

Conspiring with him now to load and bless

With fruit the vines that round the thatch eaves run

To bend with apples the mossed cottage trees

And fill all fruit with ripeness to the core

Finally, Ray was thanked for the time and trouble he takes to organise our walks and also for the interesting stories and anecdotes that always go with them. On behalf of us all may I say again, thank you Ray.

Cliff EDWARDS

HISTORY GROUP - Next Meeting

Our next get together will be a visit to Puxton Church on Monday Sept. 9th. Meet at Stonehouse Farm at 7pm and drive to Puxton. All are welcome - please feel free to join us.

TEA & CHAT

Mr & Mrs FORD of The Old School Kenn Street will host the next Tea & Chat on Thursday 19th Sept. 2.30 to 4.00 pm All welcome.

READING THE LESSON

Since Avril has left it has fallen to me to get Readers each week for the lesson in Church. We already have a tiny band of regulars on whom I can call but it would be nice to have a few more volunteers. I can say from experience that although giving the reading can be a bit daunting at first, eventually it becomes a pleasant experience.

Please contact me on 780329 - Thank you.

Cliff EDWARDS

ST JOHN'S ALTAR GUILD

September Rota - Mrs J STOWELL, Mrs S PUGH and Mrs J NAISH

NOTE -

Harvest Thanksgiving Services in Kenn this year will be held on Sunday October 6th.

KENN NEWS AND VIEWS

THANKS -

Many thanks to everyone who supported and helped at the coffee morning held at Stonehouse Farm in aid of the New Flagpole Fund. A total of 118.00 was raised.

RVN

BIRD NEWS - AUGUST

Following on from last month's notes I am delighted to report that the Somerset Levels Marsh Harriers have fledged two lusty youngsters. By early August these very dark brown birds were confident enough in their flight to chase off a passing Buzzard.

Checking on the harriers progress provided a good opportunity for butterfly spotting: 1996 is likely to be a record year for many species, none more so than the Painted Lady which is present in very large numbers. I also noted a couple of Clouded Yellows (looking bright orange) another migratory species.

Many birds have been nesting extremely late this year, no doubt as a result of the cold weather which prevailed until the end of May. A Sparrowhawk still brooding small young early in the month on the moors near Yatton was an unusual record and I have had reports of Barn Owls near Congresbury still carrying prey to their nest site. Of course these predators' prey will have all delayed their own breeding so the hawks and owls produce young at a time when sufficient food is available.

It has been noticeable how many late broods of of Blur Tits have suddenly appeared and that because caterpillars have only recently become available in numbers. All in all our wild life seems to cope pretty well with the vagaries of our weather and maintains natures cycle.

September is the principal month for autumn migration. Many of our Swallows will leave

us, but House Martins will stay on into October. We may see unusual migrant birds stopping for a few minutes, hours or days, perhaps a Wheatear or a Redstart heading south. Along the sea wall numbers of wading birds will increase and maybe a Merlin or Short Eared Owl will appear. As ever I shall be glad to know of any unusual sightings.

Trevor RIDDLE (01934-835208)

Hugh Marshall STOWELL

John STOWELL as he was always known died recently after a prolonged illness.

John had lived at Portbury House Farm for most of his life, he served in the the army during the war returning to take charge of the farm immediately afterwards due to his father's illness.

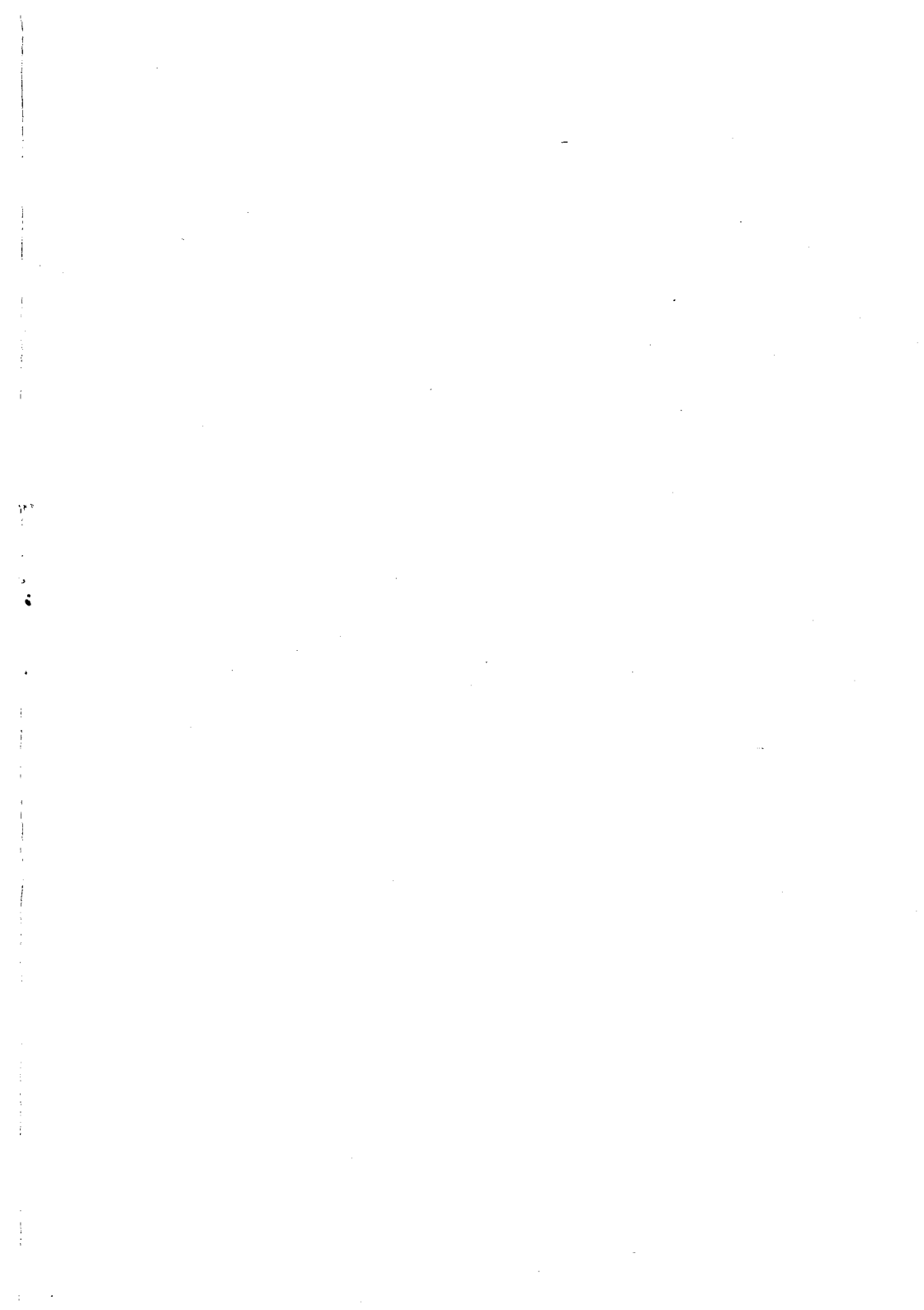
A member of the Internal Drainage Board, John was a great source of knowledge on the drainage systems in this area, he understood the moors around Kenn and Yatton and his advice was often sought when there was a problem.

John was one of the most observant people on what was happening in the countryside in this area that I have ever met. Many times I have stopped to talk to him early in the morning on the moors when he had been out checking his cattle and sheep. He often told me about the unusual things he had noticed, on one occasion he had seen an otter in the Black Ditch. He could tell you the number of cattle other farmers had in certain fields, his chief interest was farming and he was a true country-man.

Kenn Church was full, with standing room only at his funeral service, it was a wonderful gathering of family and farming folk from all around this area.

Our sincere sympathy is extended to Irene his wife, Marie, Michael and Hazel his children, his sister Kathleen and their families.

Ray NAISH



1996 KENN FUN RUN

Sunday 1st September 3.00 p.m.

Don't forget to come and support this year's FUN RUN on SUNDAY.

This year's run is in aid of HEARING DOGS FOR THE DEAF, in memory of
DAG TAYLOR

We have a Bar, a B.B.Q. Stalls, Games,
Bouncy Castle and Ballpool, Raffle etc.

WE NEED - YOU (run, walk crawl -
I don't care how)

- Sponsors
- Helpers !!!!!
- Bottles
- Raffle Prizes
- Books
- Donations

3 MILE JOG AT 3.00 p.m.

Round the Village at 3.05 p.m. - Don't be late

YES !!!!! I will run (so will Mrs. Wall Kenn Valley Club) if we
get a large enough donation. Thank you. Sheila

All donations etc. to Liz at Kenn Post Office or Ray, Simon or
Myself. Box for Goodies left at Kenn Post Office